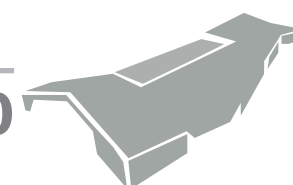
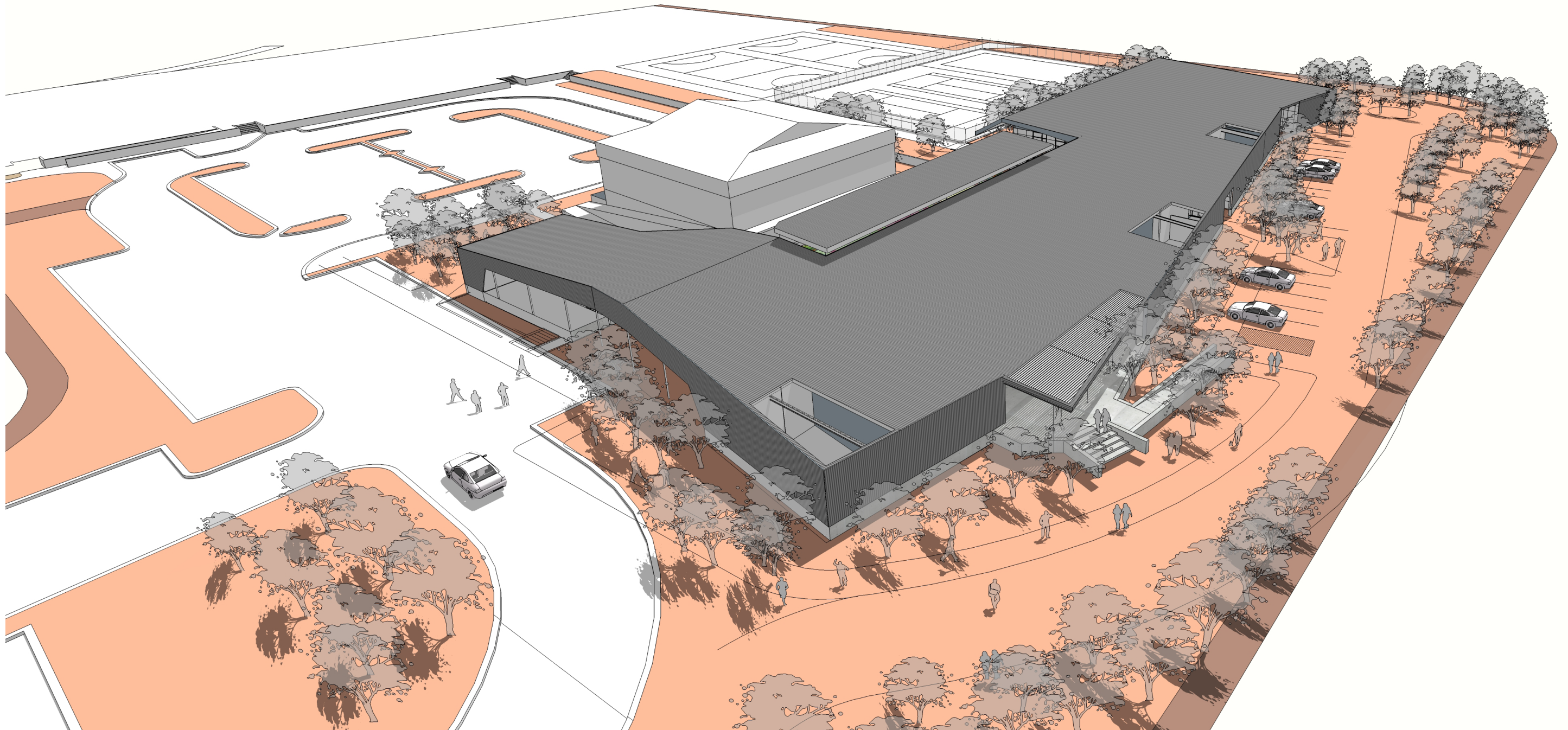
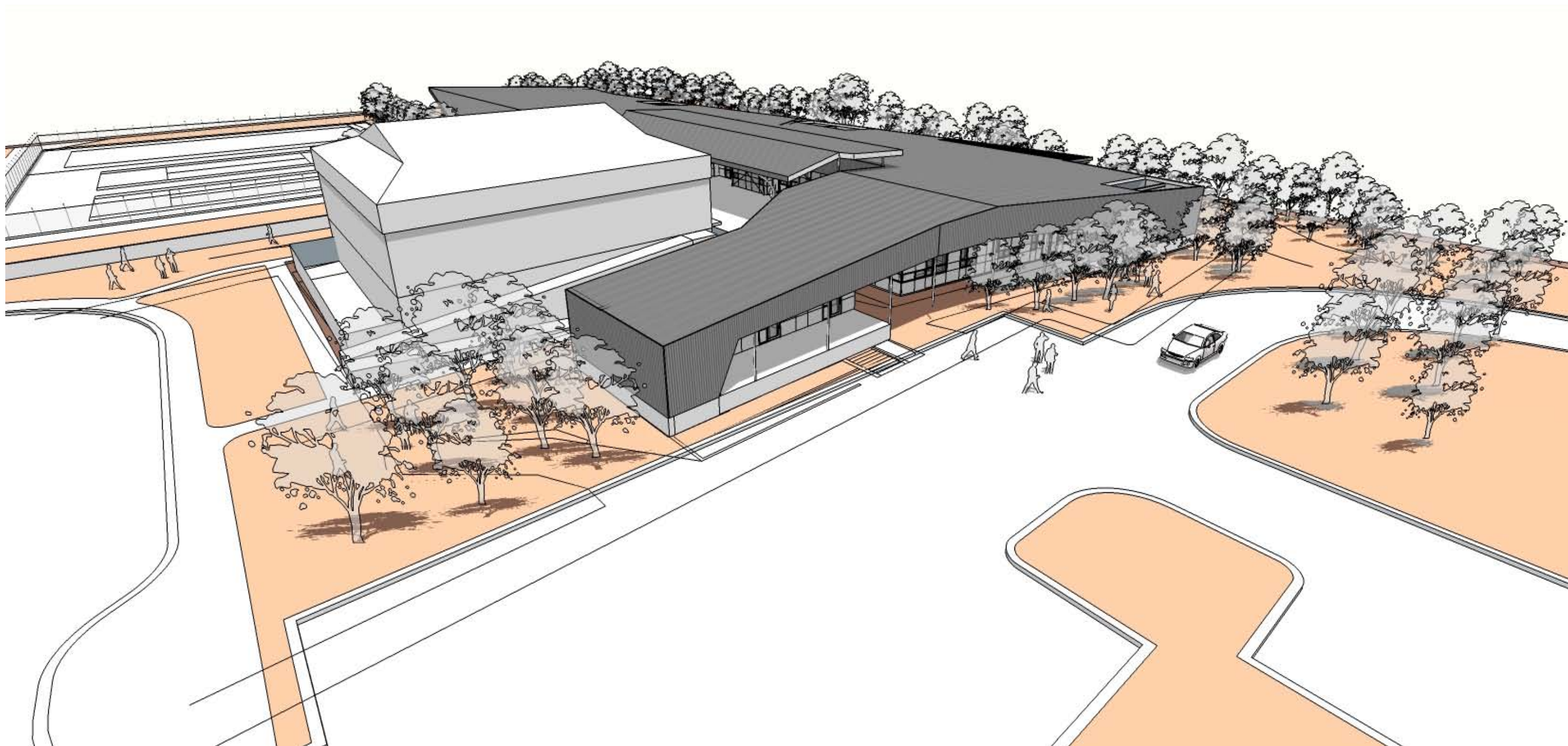


VIEW TOWARDS LIBRARY, ELC AND MP1 ENTRY

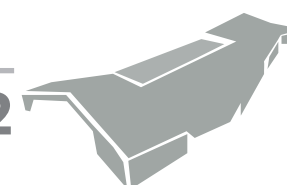




NORTH EAST VIEW TOWARDS MAIN ENTRY

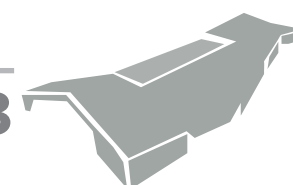


SOUTH EAST VIEW TOWARDS THE NOT FOR PROFIT OFFICES AND LIBRARY



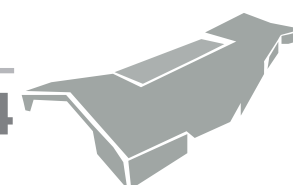


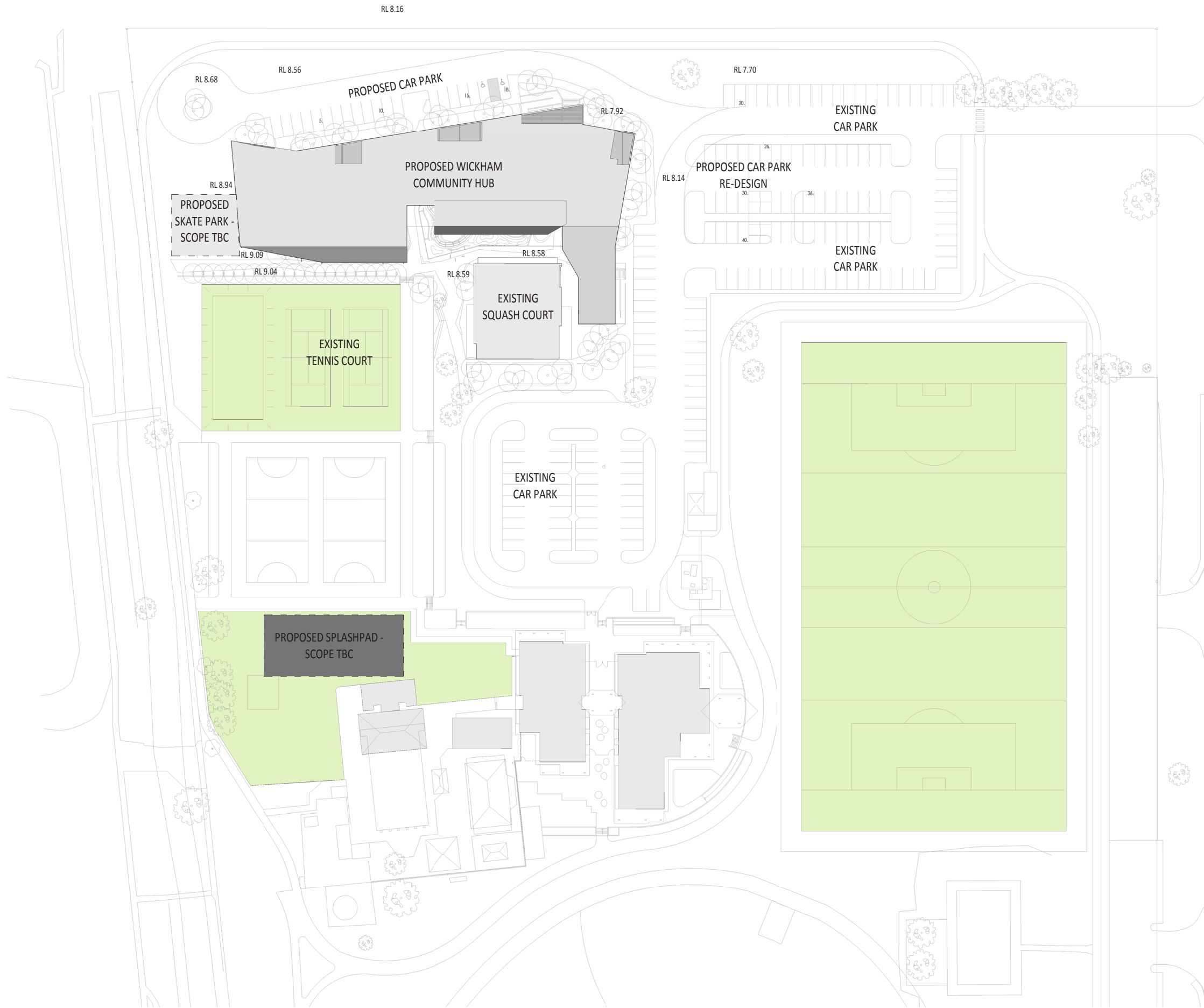
VIEW FROM THE SOUTH EAST CARPARK TOWARDS THE NOT FOR PROFIT OFFICES AND LIBRARY

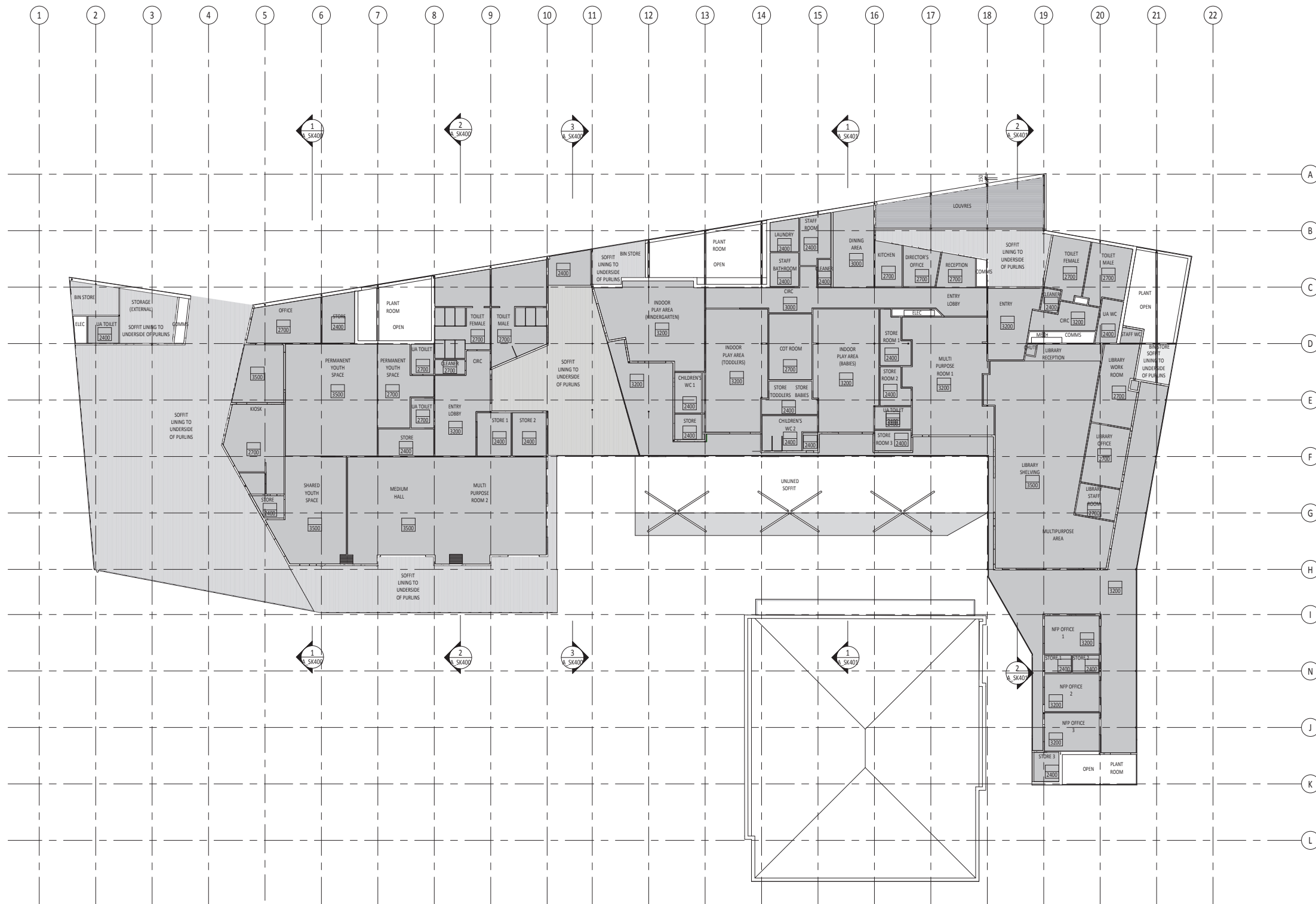




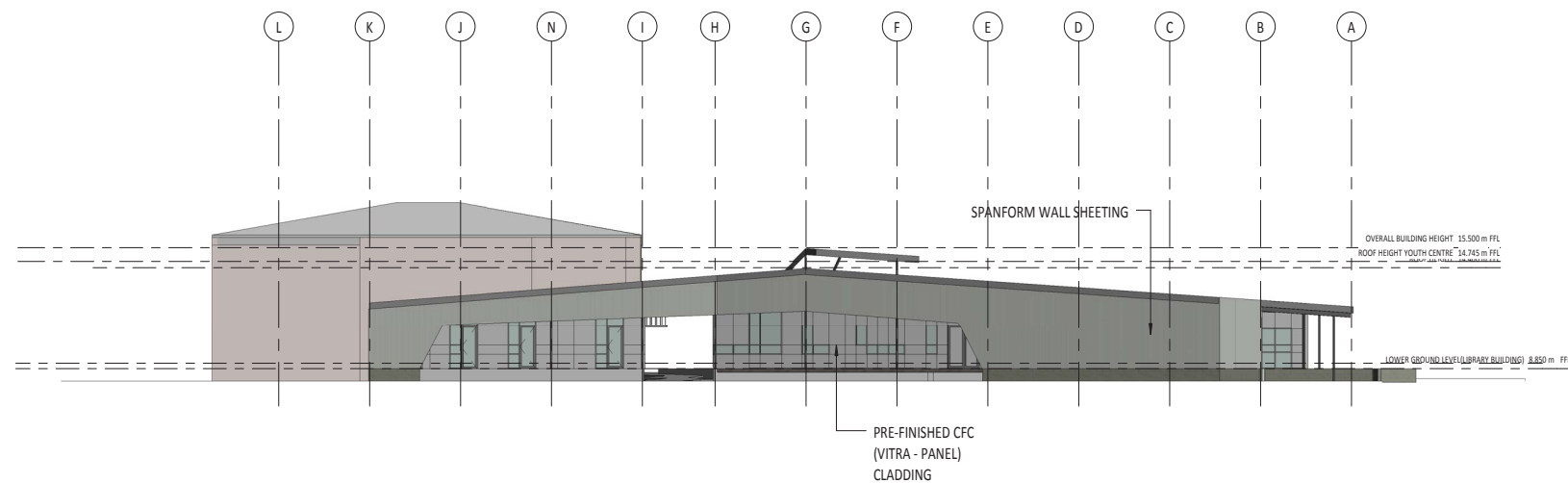
VIEW FROM THE ELC PLAYGROUND TOWARDS THE LIBRARY



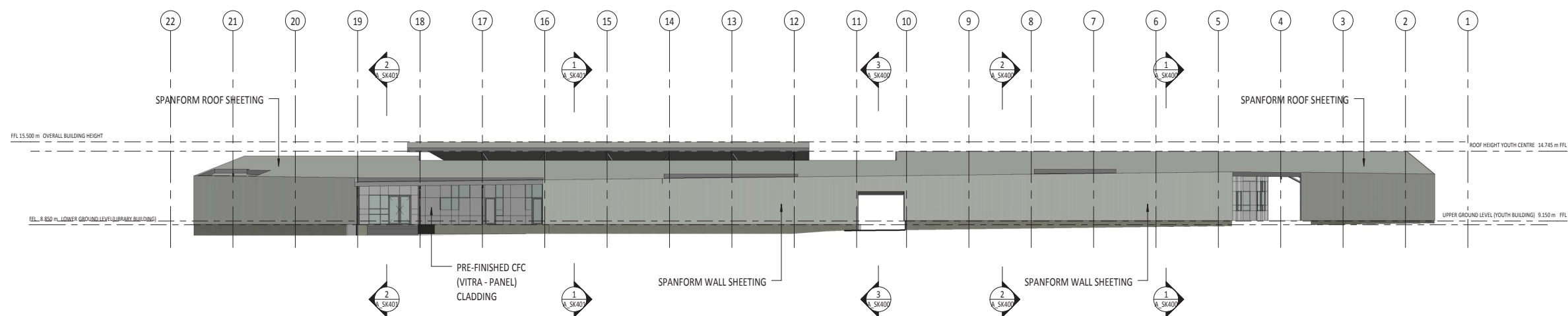




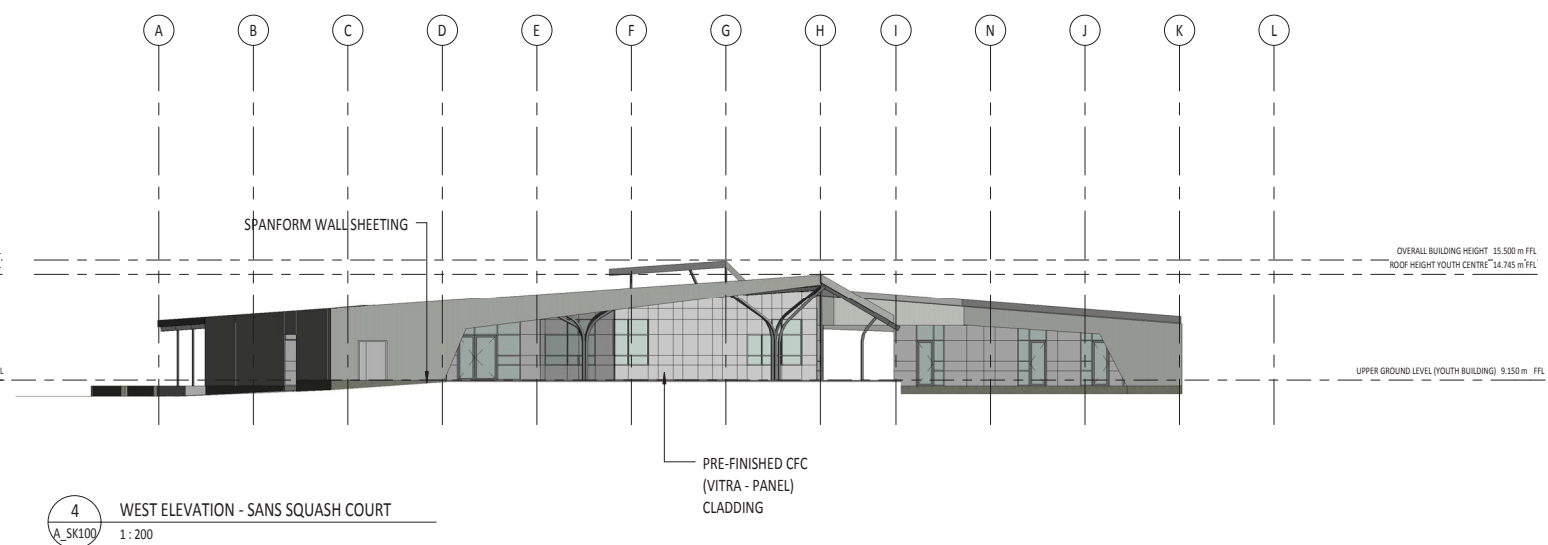
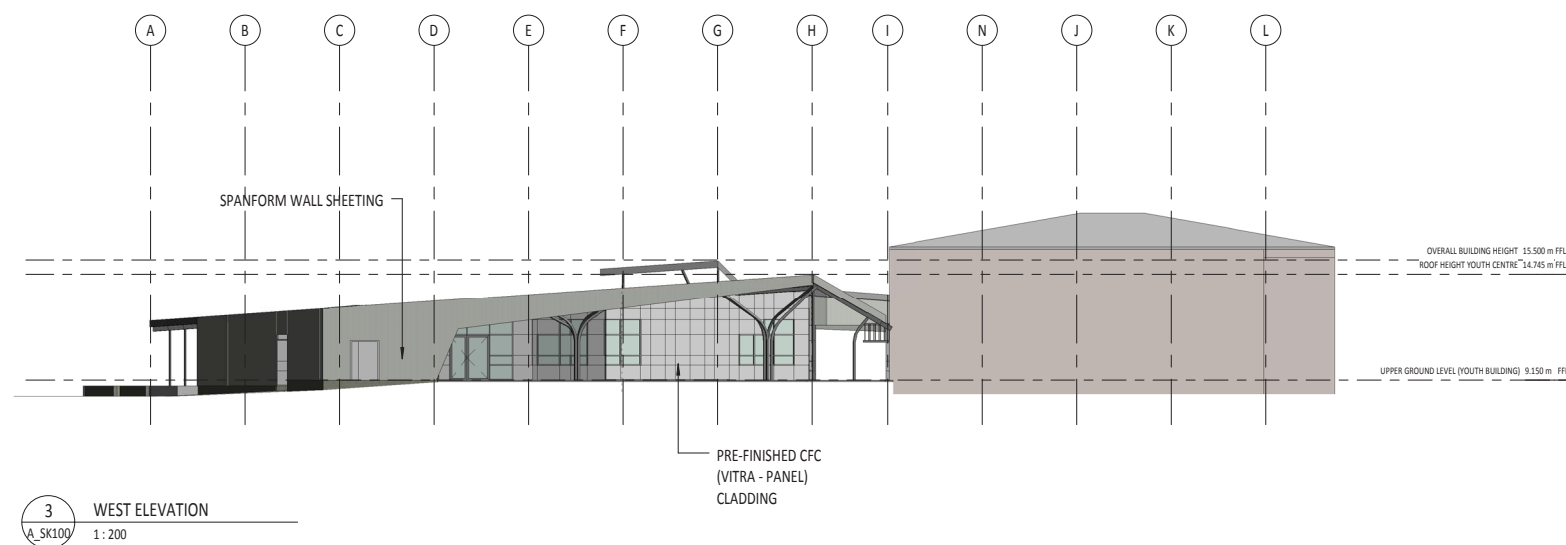
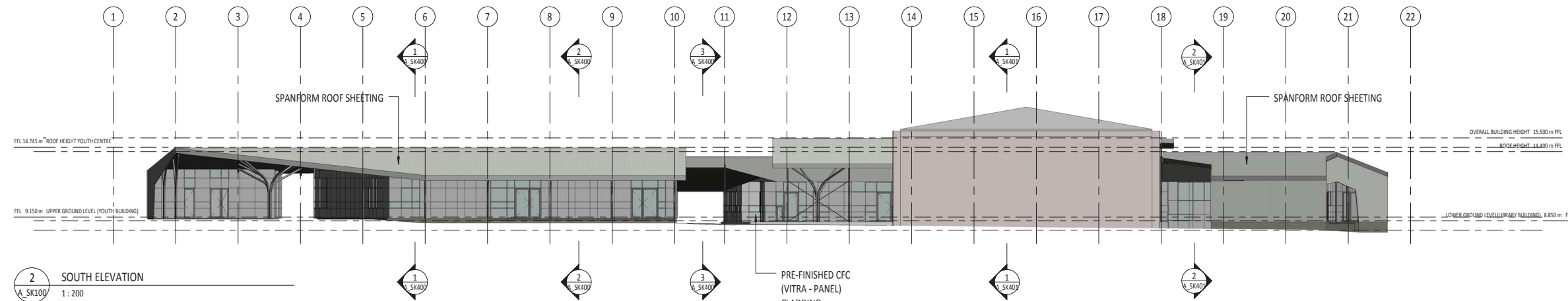
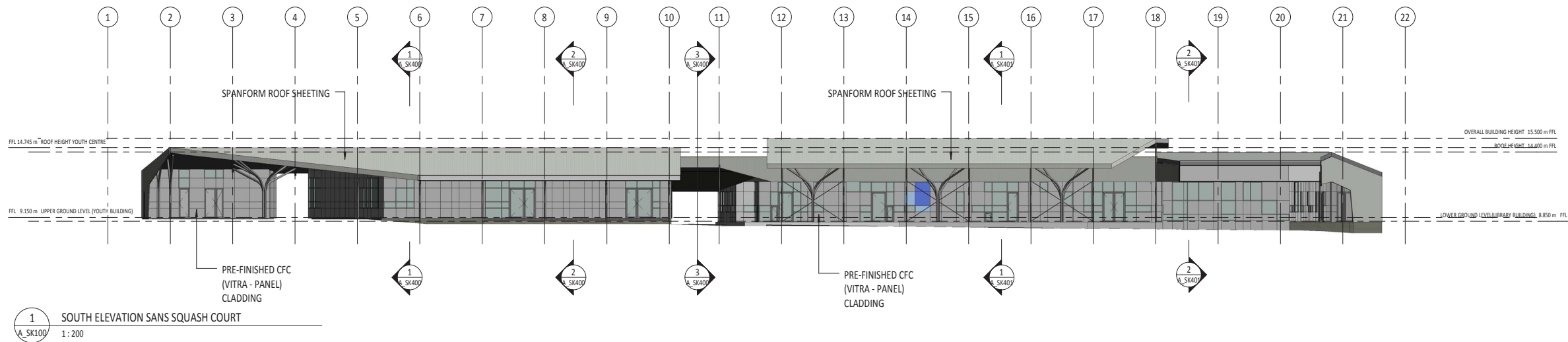
1 REFLECTED CEILING PLAN
A_SK300 1:200

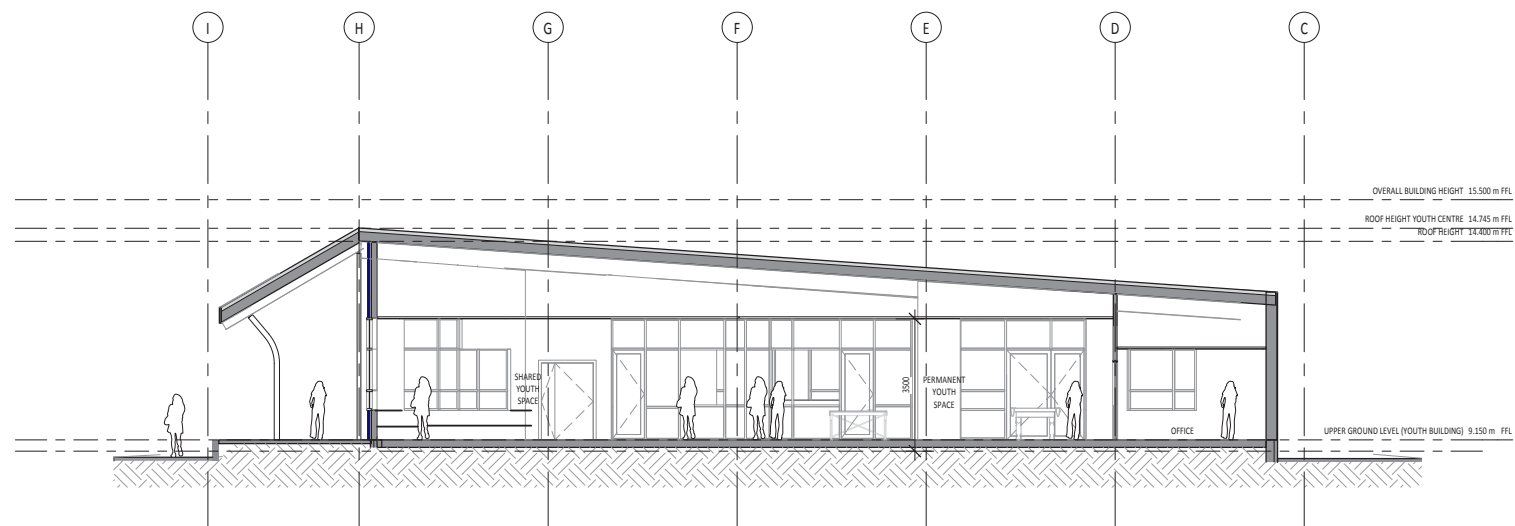


1 EAST ELEVATION
A_SK100 1 : 200

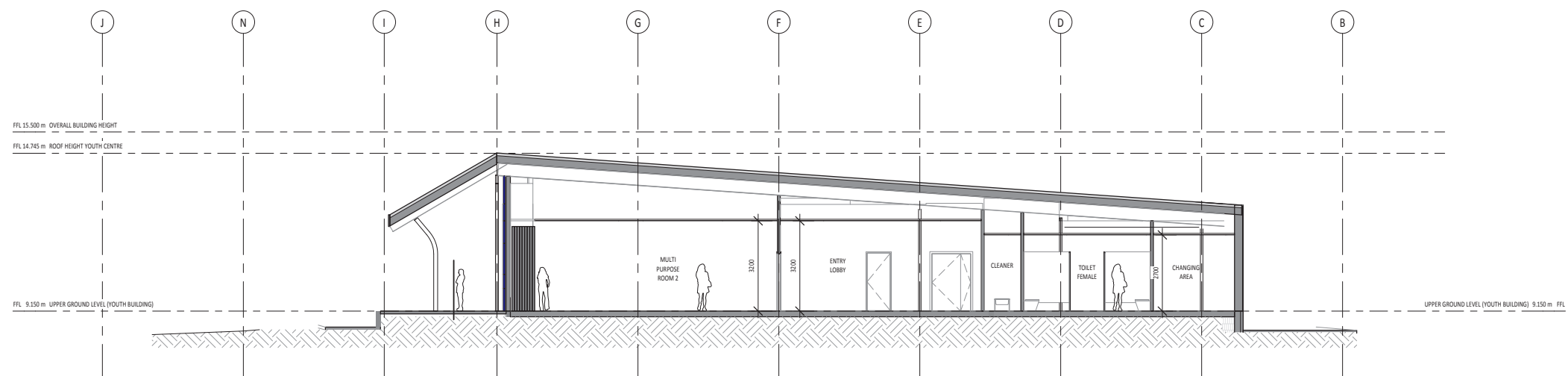


2 NORTH ELEVATION
A_SK100 1 : 200

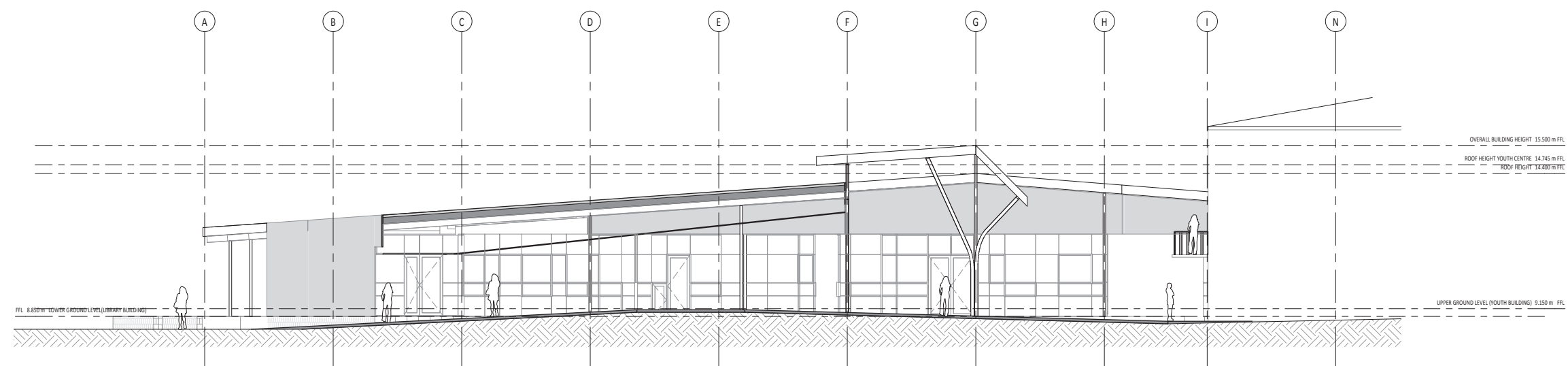




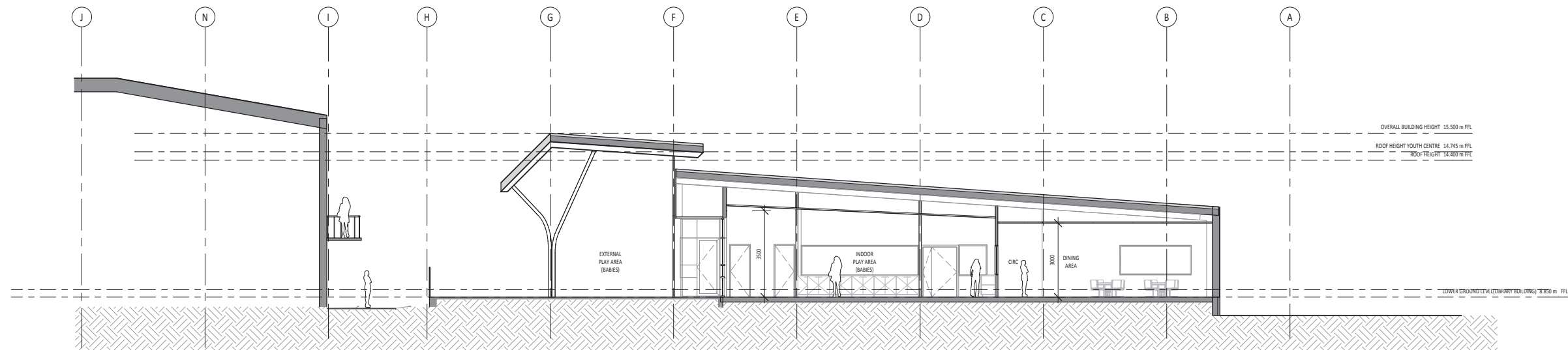
1 SECTION YOUTH SPACE
A_SK210 1:100



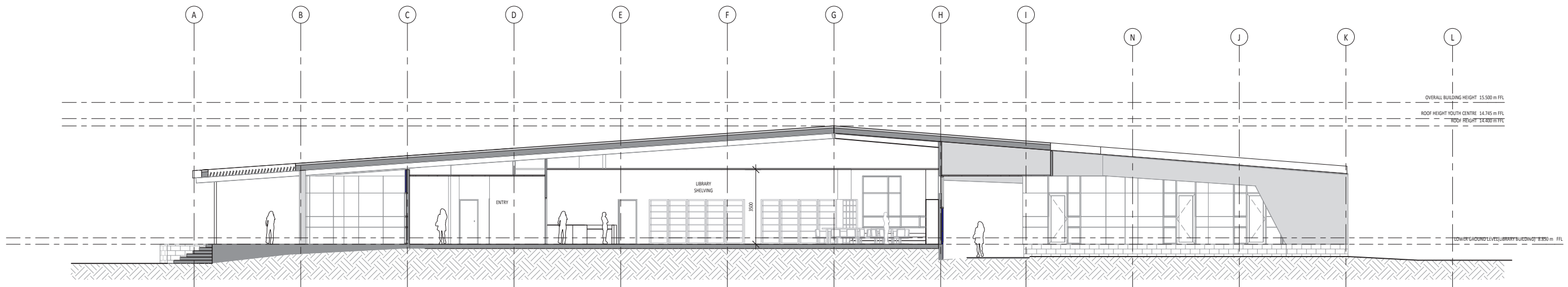
2 SECTION MULTIPURPOSE ROOM 2
A_SK210 1:100



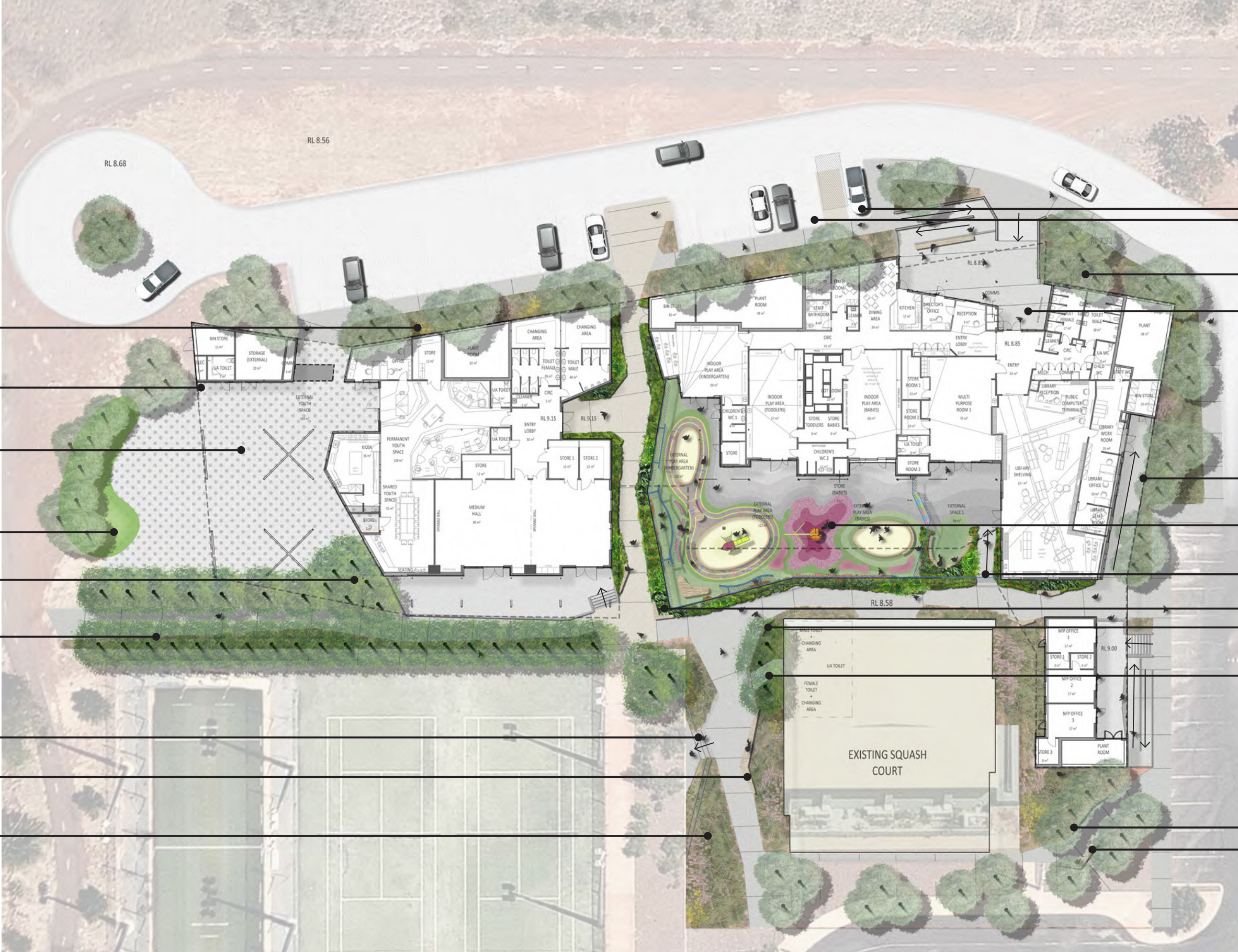
3 SECTION WALKWAY



1 SECTION ELC
A_SK210 1:100



2 SECTION LIBRARY
A_SK210 1:100



Planted drainage swale with rock pitching to reinforce areas where roof drainage falls

Stage

External Youth Skate space

Lawn seating mound to enclose youth space

Planted buffer to youth area from Hall

Shade tree lined entrance (eg *Delonix regia*)

Terraced seating stairs

Seating

Planting beds

ACROD parking

Grouped plantings of local species (eg *Eucalyptus vitrix*) to border the site

ELC entrance

Roof extent (Dashed line)

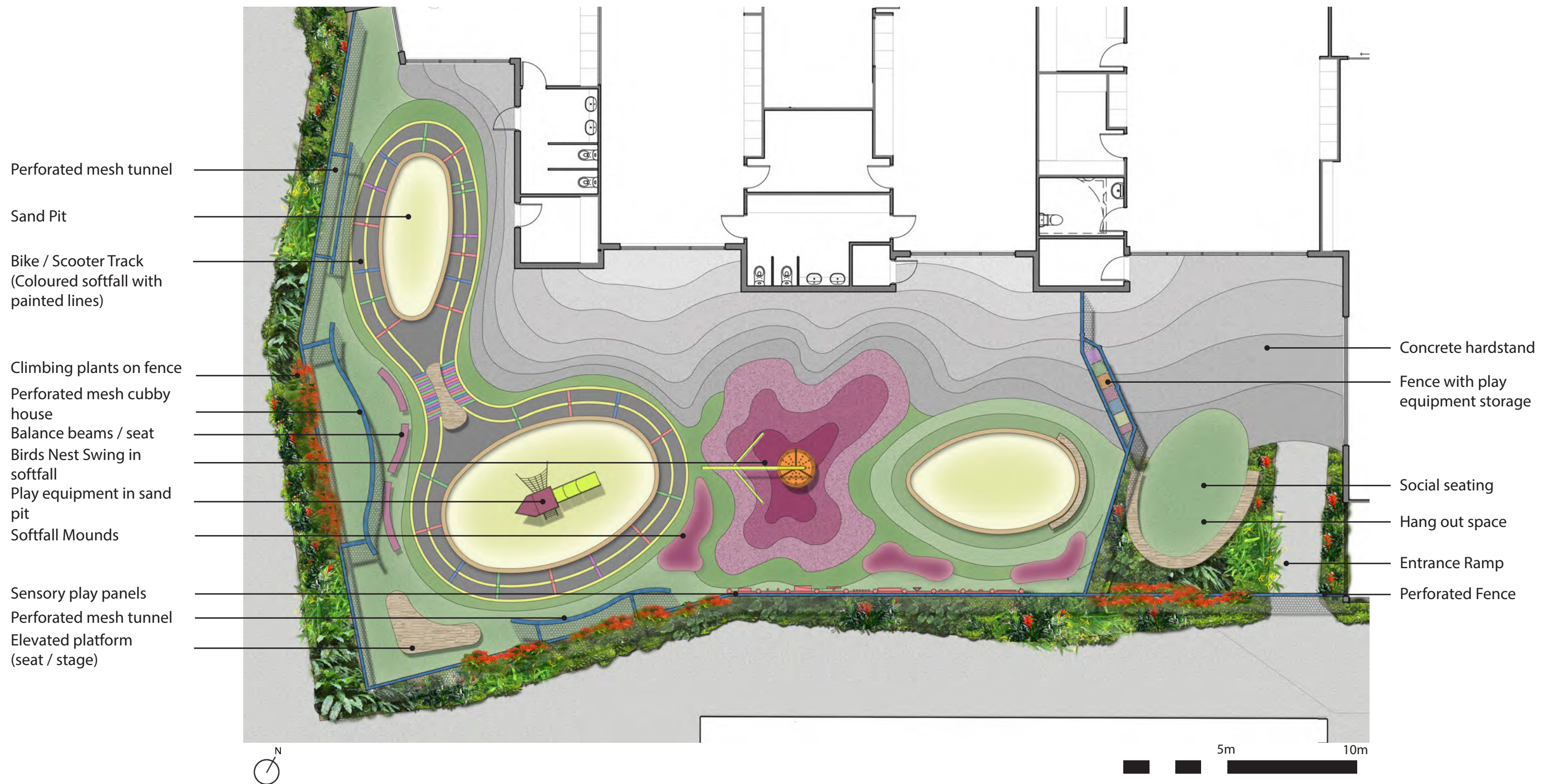
ELC external space

Multipurpose and library entrance gate

Seating

Toilet and change room access

Shaded seating opportunity



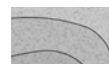
Artificial Turf

Due to the undercover nature of the space lawn is not practical. Artificial turf is a suitable alternative for undercover areas and provides a flexible and functional play surface.



Rubberised softfall

While acknowledging the reference group's concerns with softfall relating to its heat retention, it is recommended in this instance due to the undercover nature of the space and its suitability for toddler play and as a surface beneath play equipment (fall zone surface).



Concrete Hardstand

An open area of concrete is proposed as a flexible and functional surface for temporary activities such as craft activities, outdoor eating etc. The robust nature and ease of cleaning of the surface will suit a diverse range of activities.



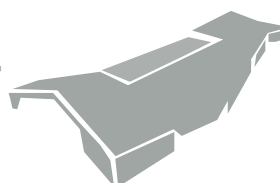
Sand surface

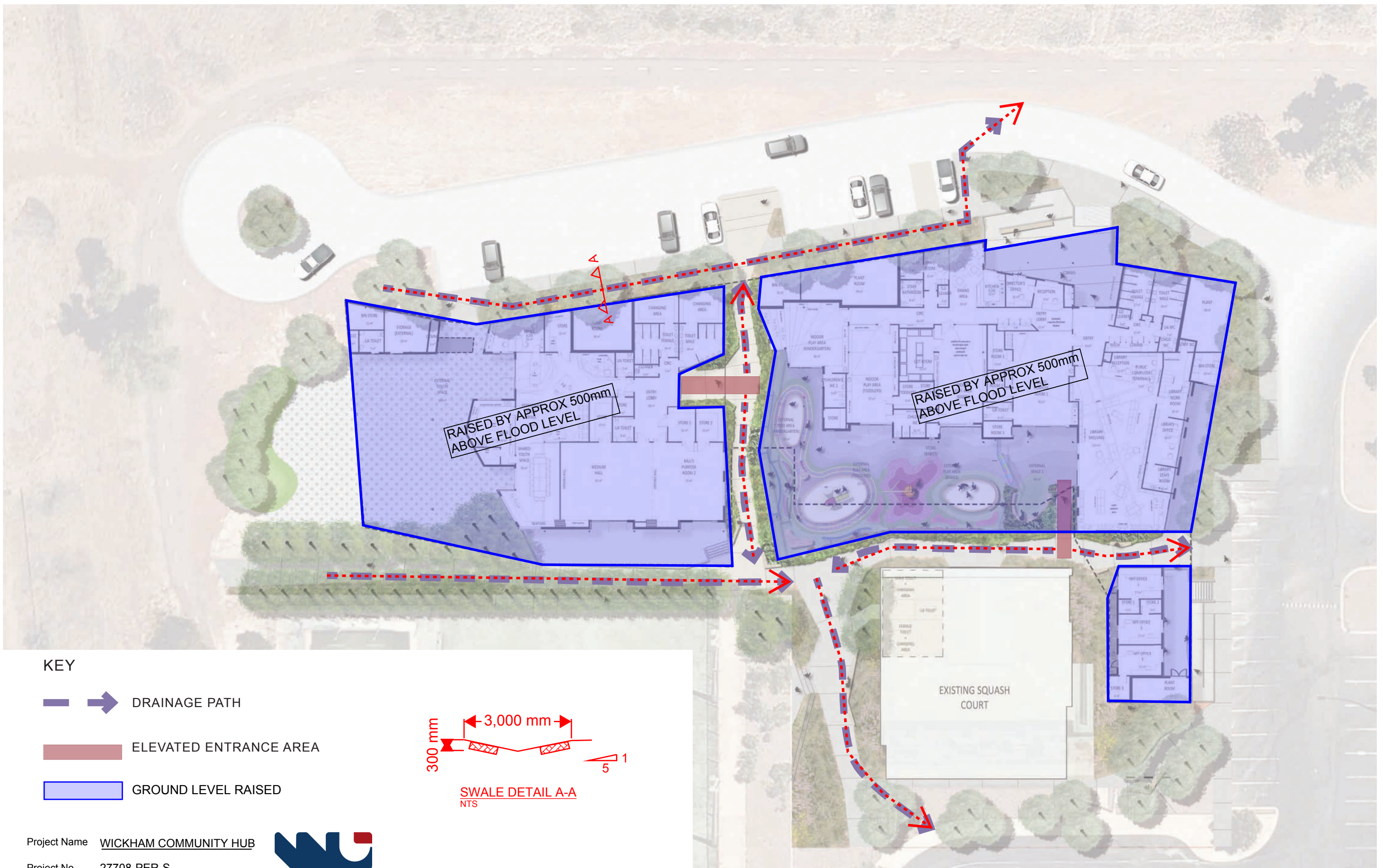
Sand pits are included as open in the babies area and with play equipment in the toddler / kindergarten area.






Planting Bed

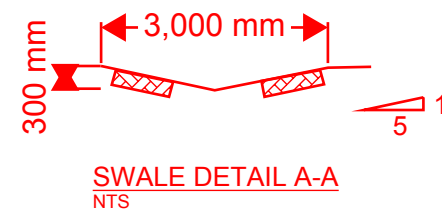
Planting that is diverse, lush and dense is proposed to surround the space with climbing plants inhabiting the exterior face and top of the mesh fence.





KEY

-  DRAINAGE PATH
-  ELEVATED ENTRANCE AREA
-  GROUND LEVEL RAISED



Project Name WICKHAM COMMUNITY HUB
 Project No 27708-PER-S
 Sketch Title STORMWATER FLOW
 Sketch No C_SK06A
 Date 28/10/2015 By calvin.croeser

WOOD & GRIEVE ENGINEERS
 Ground Level
 226 Adelaide Terrace
 Perth, WA 6000
 Phone 08 6222 7000
 Fax 08 6222 7100

Issue Date: 24/11/2015
 Gresley Abas Architects

